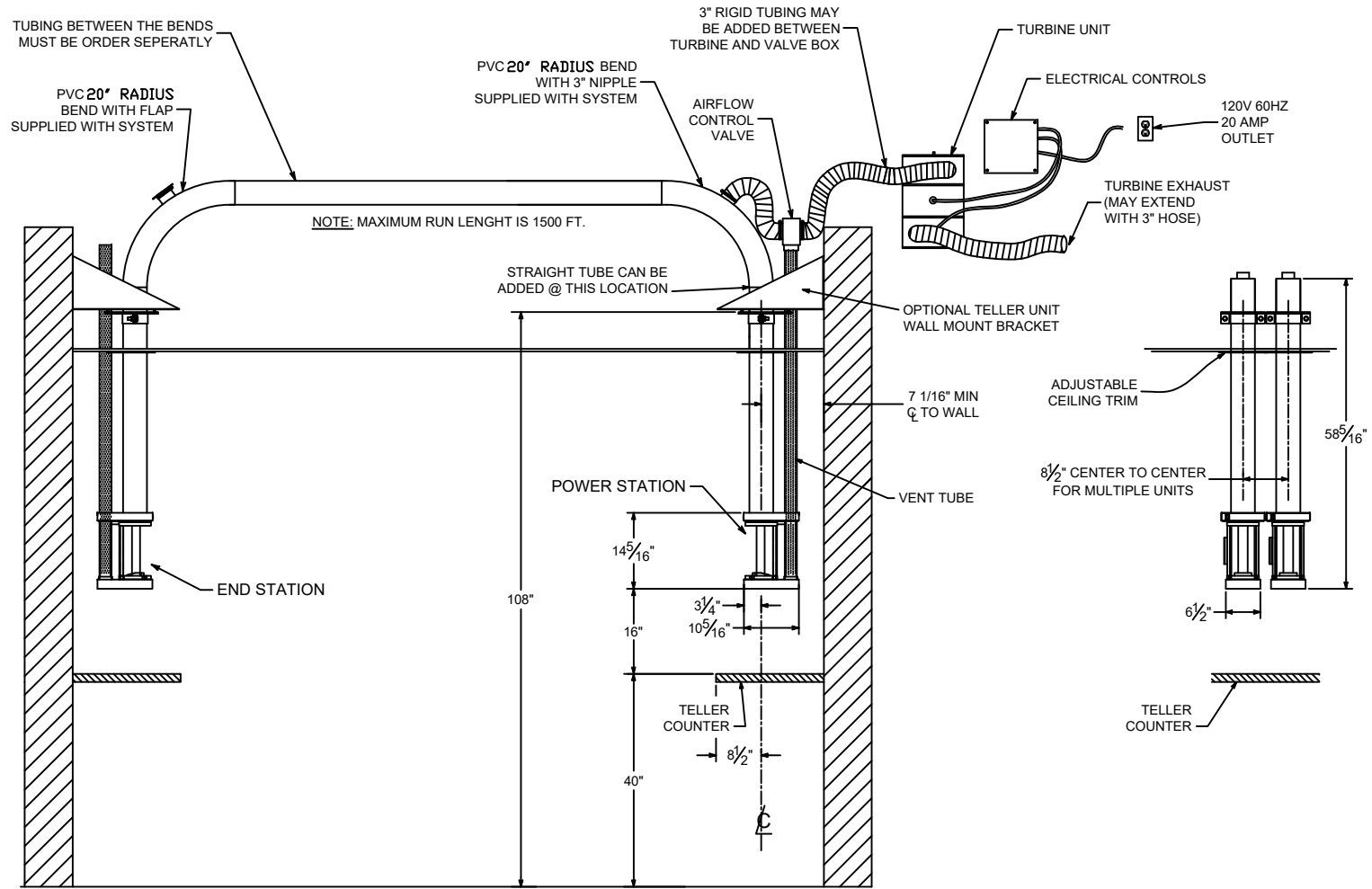


NOTE: SYSTEMS SHIPPED AFTER **MAY 31, 2008** REQUIRE THE INTERCONNECTION CABLE BETWEEN END STATIONS AND THE ELECTRICAL CONTROL UNIT TO BE **CAT5** CABLE WITH RJ45 CONNECTIONS.

NOTE: TURBINE AND CONTROL BOX MAY BE REMOTELY LOCATED IN UTILITY CLOSET, MECHANICAL ROOM, ETC.



est. 1967 <b>HAMILTON</b> CUSTOM MADE SECURITY	PROPRIETARY AND CONFIDENTIAL THESE DRAWINGS ARE THE PROPERTY OF HAMILTON SAFE CO. AND SHALL NOT BE REPRODUCED, COPIED, USED AS THE BASIS FOR MANUFACTURE OR SALE OF APPARATUS WITHOUT PERMISSION	DESCRIPTION MODEL HT-19 PNEUMATIC TRANSPORT SYSTEM	
		DRAWING/MODEL NUMBER 99-875	DATE 10/08/2021